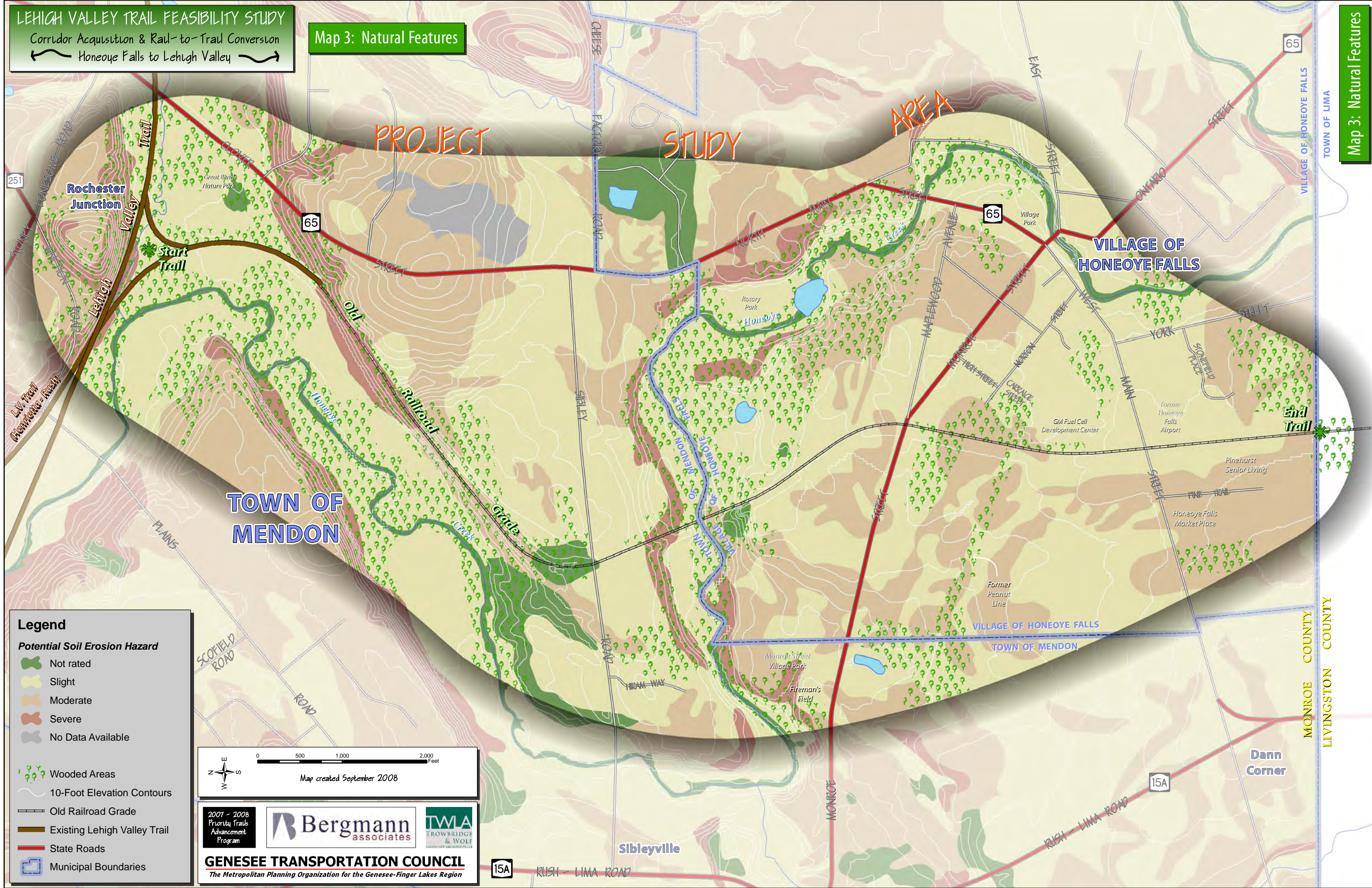


LEHIGH VALLEY TRAIL FEASIBILITY STUDY

Corridor Acquisition & Rail-to-Trail Conversion

↔ Honeoye Falls to Lehigh Valley ↔

Map 3: Natural Features



Legend

Potential Soil Erosion Hazard

- Not rated
- Slight
- Moderate
- Severe
- No Data Available

- Wooded Areas
- 10-Foot Elevation Contours
- Old Railroad Grade
- Existing Lehigh Valley Trail
- State Roads
- Municipal Boundaries



2007 - 2008 Priority Trails Advancement Program

Bergmann associates

TWA TROWBRIDGE & WOLF LANDSCAPE ARCHITECTS

GENESEE TRANSPORTATION COUNCIL
The Metropolitan Planning Organization for the Genesee-Finger Lakes Region

Map 3: Natural Features